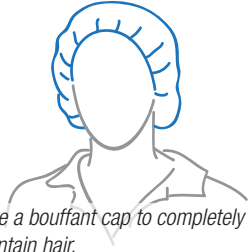


Aseptic Cleanroom Gowning Procedure

Before Entering

1. Bouffant/Hair Net



Use a bouffant cap to completely contain hair.

2. Shoe Covers



Place shoe cover over the entire shoe and contain laces.

Helpful Tips

- Do not touch any exposed part of the face with a gloved hand. If this occurs, gloves must be changed.
- Walk slowly to avoid air turbulence within cleanroom.
- Keep surfaces within the cleanroom clean using approved wipes and IPA/DI Water.

Gowning (to be done in gowning area)

3. Cleanroom Gloves



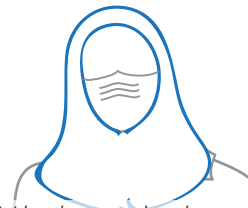
Put on cleanroom gloves after thoroughly washing hands with antibacterial soap. Dry hands after washing. Put on gloves by only touching the inside of the glove. Sanitize each glove after donning (if required).*

4. Face Mask



Bend nosepiece so mask fits on face.

5. Hood



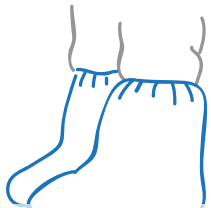
Put hood over mask and ensure face/neck seal are not exposed.

6. Coverall

Carefully unpack the cover and make sure it does not touch the floor or other surrounding furniture. Step into the cover starting with both feet and then arms.

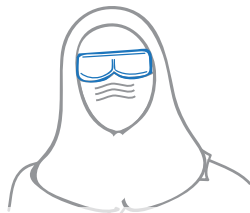


7. Boot Covers



Place boot covers over legs of coveralls.

8. Eye Protection



Put on goggles if your cleanroom requires eye protection.***

9. Sterile Gloves



Put on over first set of gloves or remove first set and then put on cleanroom gloves. Make sure gloves cover of sleeve.

Removal

Repeat above steps in the reverse order.

Additional Notes

***PER USP 800:** Wear two pairs of ASTM-tested gloves when compounding, administering, managing a spill, and disposing of Hazardous Drugs. For sterile preparations, only the outer glove shall be sterile. Wear the inner glove under the gown cuff and the outer glove over the cuff. Place gloves with long cuffs over the cuff of the gown to protect the wrist and forearm.

****PER USP 800:** Wear disposable gowns that have been tested to resist permeability by HDs and will protect the individual from contact of any HD's.

*****PER USP 800:** Eye and face protection shall be worn when handling HD's outside an engineering control.

