



the **SAFETY**  
**ZONE**®

# THE SAFETY ZONE®

For over 40 years, The Safety Zone has been partnering with our clients to ensure their successes. Our experience supplying the industrial safety, janitorial, food service, food processing and medical markets extends worldwide. We'll customize our services to fit your objectives, adding valued insight that, in combination with our comprehensive selection of superior PPE products, will enhance your sales. From a one case order to a full container or truckload, we have the ability to meet and exceed all of your PPE needs.



# SAFETY ZONE LOCATIONS



## WORLDWIDE HEADQUARTERS

Gullford, CT



## NORTH AMERICAN DISTRIBUTION CENTERS

Richmond, IN

Buena Park, CA

Houston, TX

Pompano Beach, FL



## INTERNATIONAL LOCATIONS

China

Malaysia

Thailand



# NITRILE

 COLOR OPTIONS

GNPR-(SIZE)-1BL	2.0 MIL, Super Stretch Blue Powder Free Nitrile, 100/BX 10BX/CS, SM-XL
GNPR-(SIZE)-1A	3.0 MIL, Blue Powder Free Nitrile, 100/BX 10BX/CS, SM-2X
GNPR-(SIZE)-2	3.0 MIL, Blue Powder Free Nitrile, 200/BX 10BX/CS, SM-2X
GNPR-(SIZE)-BK	3.3 MIL, Black Powder Free Nitrile, 100/BX 10BX/CS, SM-2X
GNPR-(SIZE)-1E	3.5 MIL, Blue Powder Free Nitrile, 100/BX 10BX/CS, SM-XL
GNPR-(SIZE)-1M	3.7 MIL, Blue Powder Free Nitrile, 100/BX 10BX/CS, SM-2X
GNPR-(SIZE)-1M-GR	3.7 MIL, Green Powder Free Nitrile, 100/BX 10BX/CS, SM-2X
GNPR-(SIZE)-1M-OR	3.7 MIL, Orange Powder Free Nitrile, 100/BX 10BX/CS, SM-2X
GNPR-(SIZE)-1M-WH	3.7 MIL, White Powder Free Nitrile, 100/BX 10BX/CS, SM-2X
GNPR-(SIZE)-1M-SZR	3.0 MIL, Indigo Powder Free Nitrile, 100/BX 10BX/CS, SM-XL
GNPR-(SIZE)-1	6.0 MIL, Blue Powder Free Nitrile, 100/BX 10BX/CS, SM-2X
GNPR-(SIZE)-1-K	5.3 MIL, Black Powder Free Nitrile, 100/BX 10BX/CS, SM-2X
GNDR-(SIZE)-1M	3.7 MIL, Blue Powdered Nitrile, 100/BX 10BX/CS, SM-XL
GNDR-(SIZE)-1	6.0 MIL, Blue Powdered Nitrile, 100/BX 10BX/CS, SM-XL

ALL SAFETY ZONE GLOVES COMPLY WITH THE FFDCA FOR FOOD CONTACT AND ARE DEHP FREE

WHITE  
NITRILE

BLUE  
NITRILE

INDIGO  
NITRILE

BLACK  
NITRILE

GREEN  
NITRILE

SUPER STRETCH  
BLUE NITRILE



# GLOVES

## MEDICAL GRADE

GNP-(SIZE)-1E	2.7 MIL, Blue Powder Free Nitrile, Examination, 100/BX 10BX/CS, SM-XL
GNP-(SIZE)-1	4.3 MIL, Blue Powder Free Nitrile, Examination, 100/BX 10BX/CS, XS-XL
GNP-(SIZE)-K	4.3 MIL, Black Powder Free Nitrile, Examination, 100/BX 10BX/CS, SM-XL
GNP-(SIZE)-1P	3.0 MIL, Indigo Powder Free Nitrile, Examination, 100/BX 10BX/CS, SM-XL
GNP-(SIZE)-5-T8	8.3 MIL, 12" Blue Powder Free Nitrile, Examination, 50/BX 10BX/CS, SM-2X

## AMBI-ZONE

GNPR-(SIZE)-AZO-D6	6.0 MIL, Orange Powder Free Nitrile, Diamond Grip, 100/BX 10BX/CS, MD-2X
GNPR-(SIZE)-AZO	8.0 MIL, 12" Orange Powder Free Nitrile, Fish Scale Grip, 100/BX 10BX/CS, SM-3X
GNPR-(SIZE)-AZB	8.0 MIL, 12" Black Powder Free Nitrile, Fish Scale Grip, 100/BX 10BX/CS, MD-2X

ALL SAFETY ZONE GLOVES COMPLY WITH THE FFDCA FOR FOOD CONTACT AND ARE DEHP FREE



# VINYLYL

 COLOR OPTIONS

GVDR-(SIZE)-HH	Clear Economy Powdered Vinyl, 100/BX 10BX/CS, SM-XL
GVDR-(SIZE)-1	Clear Standard Powdered Vinyl, 100/BX 10BX/CS, SM-XL
GVDR-(SIZE)-1C	Clear Premium Powdered Vinyl, 100/BX 10BX/CS, SM-2X
GVP9-(SIZE)-HH	Clear Economy Powder Free Vinyl, 100/BX 10BX/CS, SM-XL
GVP9-(SIZE)-1	Clear Standard Powder Free Vinyl, 100/BX 10BX/CS, SM-XL
GVP9-(SIZE)-1C	Clear Premium Powder Free Vinyl, 100/BX 10BX/CS, SM-2X
GVPL-(SIZE)-1C	12" Clear Premium Powder Free Vinyl, 100/BAG 10BAG/CS, MD-XL
GVP9-(SIZE)-1-BL	Blue Standard Powder Free Vinyl, 100/BX 10BX/CS, SM-2X
GVP9-(SIZE)-1C-BL	Blue Premium Powder Free Vinyl, 100/BX 10BX/CS, SM-2X
GVP9-(SIZE)-1-BL-MT	Blue Metal Detectable Premium Powder Free Vinyl, 100/BX 10BX/CS, SM-XL
GVDL-(SIZE)-1	Blue Standard Powdered Vinyl, 100/BX 10BX/CS, XS-2X
GVDL-(SIZE)-1C	Blue Premium Powdered Vinyl, 100/BX 10BX/CS, SM-XL

ALL SAFETY ZONE GLOVES COMPLY WITH THE FFDCA FOR FOOD CONTACT AND ARE DEHP FREE

CLEAR VINYL

BLUE VINYL

SYNTHETIC

BLUE SYNTHETIC VINYL



# GLOVES

GVDR-(SIZE)-1C-SY	Synthetic Premium Powdered Vinyl, 100/BX 10BX/CS, SM-XL
GVP9-(SIZE)-1-SY	Synthetic Standard Powder Free Vinyl, 100/BX 10BX/CS, SM-XL
GVP9-(SIZE)-1C-SY	Synthetic Premium Powder Free Vinyl, 100/BX 10BX/CS, SM-2X
GVP3-(SIZE)-1C	Synthetic Premium "Super Stretch" Powder Free Vinyl, 100/BX 10BX/CS, SM-XL
GVP9-(SIZE)-1-SYBL	Blue Synthetic Standard Powder Free Vinyl, 100/BX 10BX/CS, SM-XL
GVP9-(SIZE)-1C-K	Black Premium Powder Free Vinyl, 100/BX 10BX/CS, SM-XL
GVDG-(SIZE)-400C	6.0 MIL, Green Premium Powdered Vinyl, 100/BX 4BX/CS, SM-2X
GVDG-(SIZE)-1200C	6.0 MIL, Green Premium Powdered Vinyl, 300/BX 4BX/CS, SM-2X
GVP9-(SIZE)-1-GR	Green Standard Powder Free Vinyl, 100/BX 10BX/CS, SM-XL
GVP9-(SIZE)-1C-GR	Green Premium Powder Free Vinyl, 100/BX 10BX/CS, SM-XL
GVP9-(SIZE)-1RD	Red Standard Powder Free Vinyl, 100/BX 10BX/CS, SM-XL
GVP9-(SIZE)-1YE	Yellow Standard Powder Free Vinyl, 100/BX 10BX/CS, SM-XL
GVP9-(SIZE)-1WH	White Standard Powder Free Vinyl, 100/BX 10BX/CS, SM-2X
<b>MEDICAL GRADE</b>	
GVEP-(SIZE)-1C	Clear Premium Powder Free Vinyl, Examination, 100/BX 10BX/CS, SM-XL
GVEP-(SIZE)-1C-SY	Synthetic Premium Powder Free Vinyl, Examination, 100/BX 10BX/CS, SM-XL

ALL SAFETY ZONE GLOVES COMPLY WITH THE FFDCA FOR FOOD CONTACT AND ARE DEHP FREE

BLACK VINYL

GREEN VINYL

RED VINYL

YELLOW VINYL

WHITE VINYL



# LATEX GLOVES

   COLOR OPTIONS

GRDR-(SIZE)-1-T	4.5 MIL, Powdered Latex, 100/BX 10BX/CS SM-XL
GRPR-(SIZE)-1-T	5.0 MIL, Powder Free Latex, 100/BX 10BX/CS XS-2X
GRDL-(SIZE)-1	4.5 MIL, Blue Powdered Latex, 100/BX 10BX/CS, SM-XL
GRPL-(SIZE)-1	4.5 MIL, Blue Powder Free Latex, 100/BX 10BX/CS, SM-XL
GRPR-(SIZE)-1-T8	8.0 MIL, Powder Free Latex, Double Chlorinated, 100/BX 10BX/CS, SM-XL
GRHL-(SIZE)-5M-P	13.0 MIL, 12" Blue Powder Free Latex, Double Chlorinated, 50/BX 10BX/CS, SM-2X
GRHP-(SIZE)-5M	13.0 MIL, 12" Powder Free Latex, 50/BX 10BX/CS, SM-XL
<b>MEDICAL GRADE</b>	
GREP-(SIZE)-1	4.5 MIL, Powder Free Latex, Examination, 100/BX 10BX/CS SM-XL
GREP-(SIZE)-1T	5.5 MIL, Premium Powder Free Polymer Coated Latex, Examination, 100/BX 10BX/CS, SM-XL
GREH-(SIZE)-5M	10.0 MIL, 12" High Risk Polymer Coated Powder Free Latex, Examination, 50/BX 10BX/CS, SM-XL
GREL-(SIZE)-5M-P	13.0 MIL, 12" Blue High Risk Powder Free Latex, Examination, 50/BX 10BX/CS, SM-2X

ALL SAFETY ZONE GLOVES COMPLY WITH THE FFDCA FOR FOOD CONTACT AND ARE DEHP FREE

NATURAL LATEX



BLUE LATEX



HEAVY DUTY LATEX





# POLY GLOVES

GDPE-(SIZE)	Clear High Density Polyethylene Glove, 100/BX 10BX/Carton 10Cartons/CS (10,000/Master Case), SM-XL
GDPE-(SIZE)-5	Clear High Density Polyethylene Glove, 500/BX 2BX/Carton 10Cartons/CS (10,000/Master Case), SM-XL
GDPE-(SIZE)-4-500	Clear High Density Polyethylene Glove, 500/BX 4BX/CS (2,000/Master Case), SM-XL
GDPL-(SIZE)	Clear Low Density Polyethylene Glove, 100/BX 10BX/Carton 10Cartons/CS (10,000/Master Case), SM-XL
GDPL-(SIZE)-5	Clear Low Density Polyethylene Glove, 500/BX 2BX/Carton 10Cartons/CS (10,000/Master Case), SM-XL
GDCP-(SIZE)	Clear Polyethylene/Cast Polyethylene Embossed Glove, 100/BX 10BX/CS, SM-XL
GDCP-HC	Clear Polyethylene/Cast Polyethylene Embossed Glove, 50/HEADER 20HEADERS/CS, LG
GDSH-(SIZE)	Clear Stretch Hybrid Polyethylene Glove, 100/BX 10BX/CS, SM-XL
GDSH-(SIZE)-BL	Blue Stretch Hybrid Polyethylene Glove, 100/BX 10BX/CS, SM-XL
GDPE-LG-18	18" Clear Polyethylene Glove, 250/BX 10BX/CS, Size Large
GDPE-LG-35	35" Clear Polyethylene Glove, 100/BX 10BX/CS, Size Large

ALL SAFETY ZONE GLOVES COMPLY WITH THE FFDCA FOR FOOD CONTACT AND ARE DEHP FREE

35" CLEAR  
POLYETHYLENE GLOVE



18" CLEAR  
POLYETHYLENE GLOVE



CLEAR HIGH DENSITY  
POLYETHYLENE GLOVE



CAST POLYETHYLENE  
GLOVE



CLEAR STRETCH  
HYBRID POLY



BLUE STRETCH  
HYBRID POLY



# CHEMICAL

 COLOR OPTIONS

GRFY-(SIZE)-2E	12 MIL, Yellow Flock Lined Latex, One Pair Per Bag, 12DZ/CS, SM-XL
GRFY-(SIZE)-1B	16 MIL, Yellow Flock Lined Latex, Bulk Packed Twelve Pair Per Bag, 10DZ/CS, SM-XL
GRFY-(SIZE)-1C	16 MIL, Yellow Flock Lined Latex, One Pair Per Bag, 10DZ/CS, SM-2X
GRFY-(SIZE)-1S	18 MIL, Yellow Flock Lined Latex, One Pair Per Bag, 10DZ/CS, SM-XL
GRFY-(SIZE)-2T-R/C	20 MIL, Yellow Flock Lined Latex, Chlorinated, One Pair Per Bag, 12DZ/CS, SM-XL
GRFL-(SIZE)-1S	18 MIL, Blue Flock Lined Latex, One Pair Per Bag, 10DZ/CS, SM-XL
GRFL-(SIZE)-2T-R/C	20 MIL, Blue Flock Lined Latex, Chlorinated, One Pair Per Bag, 12DZ/CS, SM-XL
GRFL-(SIZE)-1C	16 MIL, Blue Flock Lined Latex, One Pair Per Bag, 10DZ/CS, SM-XL
GRLY-(SIZE)-1SF	28 MIL, Blue Flock Lined Neoprene Over Yellow Latex, One Pair Per Bag, 10DZ/CS, SM-XL
GRFO-(SIZE)-1SF	28 MIL, Orange Flock Lined Neoprene Latex Blend, One Pair Per Bag, 10DZ/CS, SM-XL

ALL SAFETY ZONE GLOVES COMPLY WITH THE FFDCA FOR FOOD CONTACT AND ARE DEHP FREE

**YELLOW FLOCK  
LINED LATEX**  
(12, 16, 18 MIL)

**BLUE FLOCK  
LINED LATEX**  
(16, 18 MIL)

**BLUE CHLORINATED  
FLOCK LINED LATEX**  
(20 MIL)

**BLUE NEOPRENE  
OVER YELLOW  
LATEX**  
(28 MIL)

**ORANGE FLOCK  
LINED NEOPRENE  
& LATEX BLEND**  
(28 MIL)



# PROCESSING GLOVES

GNGF-(SIZE)-15C	15 MIL, Standard Green Flock Lined Nitrile, One Pair Per Bag, 12DZ/CS, SM-XL
GNGF-(SIZE)-15	15 MIL, Premium Green Flock Lined Nitrile, One Pair Per Bag, 12DZ/CS, SM-2X
GNGU-(SIZE)-11C	11 MIL, Standard Green Unlined Nitrile, One Pair Per Bag, 12DZ/CS, SM-XL
GNGU-(SIZE)-11	11 MIL, Premium Green Unlined Nitrile, One Pair Per Bag, 12DZ/CS, SM-2X
GNGU-(SIZE)-22-18	22 MIL, 18" Green Unlined Nitrile, One Pair Per Bag, 3DZ/CS, MD-XL
GRCA-(SIZE)-1SF	18 MIL, Amber Canner Unlined Latex, Chlorinated, One Pair Per Bag, 10DZ/CS, XS-XL
GRCA-(SIZE)-1B	16 MIL, Amber Canner Unlined Latex, Chlorinated, Bulk Packed, 10DZ/CS,
GRCL-(SIZE)-1SF	18 MIL, Blue Canner Unlined Latex, Chlorinated, One Pair Per Bag, 10DZ/CS, SM-XL
GRBU-(SIZE)-6T	40 MIL, 16" Black Heavy Duty Latex Pot Scrubber, One Pair Per Bag, 6DZ/CS, LG-XL
GRFB-(SIZE)-1S	28 MIL, Black Flock Lined Neoprene Latex Blend, One Pair Per Bag, 10DZ/CS, SM-XL

ALL SAFETY ZONE GLOVES COMPLY WITH THE FFDCA FOR FOOD CONTACT AND ARE DEHP FREE

GREEN FLOCK LINED &  
GREEN UNLINED NITRILE



NATURAL  
LATEX CANNERS



BLUE  
LATEX CANNERS



BLACK LATEX  
POT SCRUBBER



# SHOE & BOOT COVERS

DSCL-300-(SIZE)	Blue Polypropylene Disposable Non-skid Shoe Cover, 300/CS, LG-2X
DSCL-300MM	Blue Polypropylene Disposable Non-skid Shoe Cover, Machine Made, 300/CS, LG
DSCL-300(SIZE)MM	Blue Polypropylene Disposable Non-skid Shoe Cover, Machine Made, 300/CS, XL-2X
DSCL-300-D	Blue Polypropylene Disposable Non-skid Shoe Cover, Dispenser Boxed, 300/CS, LG
DSCL-300-XL-D	Blue Polypropylene Disposable Non-skid Shoe Cover, Dispenser Boxed, 300/CS, XL
DSCW-300-XL	White Polypropylene Disposable Non-skid Shoe Cover, 300/CS, XL
DSCW-2-XL-SMS50	White 50 Gram SMS Polypropylene Disposable Shoe Cover, 200/CS, XL
DSC-CPE-(SIZE)-WH	White Cast Polyethylene "CPE" Embossed Shoe Cover, 300/CS, LG-XL
DSC-CPE-(SIZE)-BL	Blue Cast Polyethylene "CPE" Embossed Shoe Cover, 300/CS, XL-2X
BPD3-XL-5	3 MIL, Clear Polyethylene Boot Cover, 50/BG 10BG/CS, XL
BPD5-(SIZE)-5E	5 MIL, Clear Polyethylene Boot Cover, Elastic Top, 50/BX 10BX/CS, XL-2X
BPD5-XL-5T	5 MIL, Clear Polyethylene Boot Cover, Ties, 50/BX 10BX/CS, XL
BN70-(SIZE)	Yellow Heavy Weight Latex Nuke Boot, Grit Sole, Sold by the Pair, 50/CS, MD-3X

## SHOE COVER FIT GUIDE

LARGE - Fits Shoe Sizes 7-10, Fits Boot Sizes 7-9  
 XLARGE - Fits Shoe Sizes 9-14, Fits Boot Sizes 10-13  
 2X LARGE - Fits Shoe Sizes 15-18, Fits Boot Sizes 14-18

DSCL-300-(SIZE)



DSCW-300-XL



DSC-CPE-(SIZE)-WH



DSC-CPE-(SIZE)-BL



BPD3-XL-5



BPD5-XL-5E



BPD5-XL-5T



BN70-(SIZE)



# SLEEVES

DSWP-16-2MM	16" White Machine Made Polyethylene Sleeve, 2,000/CS
DSBP-16-2MM	16" Blue Machine Made Polyethylene Sleeve, 2,000/CS
DSWP-18-1-MM	18" White Machine Made Polyethylene Sleeve, 100/BG 10BG/CS
DSBP-18-1-MM	18" Blue Machine Made Polyethylene Sleeve, 100/BG 10BG/CS
DSWP-18-1	18" White Polyethylene Sleeve, 100/BG 10BG/CS
DSBP-18-1	18" Blue Polyethylene Sleeve, 100/BG 10BG/CS
DSWP-18-1-CL	18" Clear Polyethylene Sleeve, 100/BG 10BG/CS
DSBV-18	18" Blue Vinyl Sleeve, 6 DZ Pair/CS
DSWV-18	18" White Vinyl Sleeve, 6 DZ Pair/CS
DSPP-18-200	18" White Polypropylene Sleeve, 200/CS
DSPP-18-200-PE	18" White Polyethylene Coated Polypropylene Sleeve, 200/CS
DSWH-18-BB	18" White Breathable Microporous Sleeve, 200/CS
TY-14500-200	18" White Dupont™ Tyvek® Sleeve, 200/CS

DSWP-18-1



DSPP-18-200-PE



DSBV-18



DSWP-18-1-CL



DSWV-18



DSBP-18-1



DSPP-18-200



DSWH-18-BB



# HOOD & BEARD COVERS

DHOOD-1000	White Polypropylene Hood, 100/BG 10BG/CS
DHOOD-1000-XL	White Polypropylene Hood, 100/BG 10BG/CS
DHOOD-2000	White Polypropylene Hood, 100PCS/BG 20BG/CS
DHOOD-1000-BL	Blue Polypropylene Hood, 100PCS/BG 10BG/CS
DBRD-1000	White Polypropylene Beard Cover, 100/BG 10BG/CS
DBRD-1000XL	White Polypropylene Beard Cover, 100/BG 10BG/CS
DBRD-1000-MM	White Machine Made Polypropylene Beard Cover, 100/BG 10BG/CS
DBRD-500	White Polypropylene Beard Cover, 100/BG 5BG/CS
DBRD-1000BL	Blue Polypropylene Beard Cover, 100/BG 10BG/CS
DPBC-1000	White Polyester Mesh Beard Net, 100/BG 10BG/CS
DPBC-1000-BR	Brown Polyester Mesh Beard Net, 100/BG 10BG/CS

ALL SAFETY ZONE HOODS AND BEARD COVERS ARE LATEX FREE

DHOOD-2000



DHOOD-1000-BL



DBRD-1000



DBRD-1000BL



DPBC-1000



DPBC-1000-BR



# HAIRNETS

DPHN-18-1	18" White Heavyweight Polyester Halrnet, 100/BG 10BG/CS
DPHN-21-1	21" White Heavyweight Polyester Halrnet, 100/BG 10BG/CS
DPHN-24-1	24" White Heavyweight Polyester Halrnet, 100/BG 10BG/CS
DPHN-27-1	27" White Heavyweight Polyester Halrnet, 100/BG 10BG/CS
DPHN-32-1	32" White Heavyweight Polyester Halrnet, 100/BG 10BG/CS
DPHN-18-1-BR	18" Brown Heavyweight Polyester Halrnet, 100/BG 10BG/CS
DPHN-21-1-BR	21" Brown Heavyweight Polyester Halrnet, 100/BG 10BG/CS
DPHN-24-1-BR	24" Brown Heavyweight Polyester Halrnet, 100/BG 10BG/CS
DPHN-27-1-BR	27" Brown Heavyweight Polyester Halrnet, 100/BG 10BG/CS
DPLW-22-BK	22" Black Lightweight Nylon Halrnet, 144/BX 10BX/CS
DPLW-28-BK	28" Black Lightweight Nylon Halrnet, 144/BX 10BX/CS
DPLW-22-BR	22" Brown Lightweight Nylon Halrnet, 144/BX 10BX/CS
DPLW-28-BR	28" Brown Lightweight Nylon Halrnet, 144/BX 10BX/CS
DPLW-22-LB	22" Light Brown Lightweight Nylon Halrnet, 144/BX 10BX/CS
DPLW-28-LB	28" Light Brown Lightweight Nylon Halrnet, 144/BX 10BX/CS
DPLW-22-WH	22" White Lightweight Nylon Halrnet, 144/BX 10BX/CS
DPLW-28-WH	28" White Lightweight Nylon Halrnet, 144/BX 10BX/CS

ALL SAFETY ZONE HAIRNETS ARE LATEX FREE

DPHN-(SIZE)-1

DPHN-(SIZE)-1-BR

DPLW-(SIZE)-WH

DPLW-(SIZE)-BR



# BOUFFANT



DBWH-19-1	19" White Bouffant, 100/BG 10BG/CS
DBWH-21-1	21" White Bouffant 100/BG 10BG/CS
DBWH-24-1	24" White Bouffant, 100/BG 10BG/CS
DBWH-28-1	28" White Bouffant, 100/BG 10BG/CS
DBWH-21-1B	21" White Bouffant, 100/BX 10BX/CS
DBWH-24-1B	24" White Bouffant, 100/BX 10BX/CS

DBWH-19-5	19" White Bouffant, 100/BG 5BG/CS
DBWH-21-5	21" White Bouffant, 100/BG 5BG/CS
DBWH-24-5	24" White Bouffant, 100/BG 5BG/CS
DBWH-28-5	28" White Bouffant, 100/BG 5BG/CS
DBWH-19-1-PL	19" White Pleated Bouffant, 100/BG 10BG/CS
DBWH-21-1-PL	21" White Pleated Bouffant, 100/BG 10BG/CS
DBWH-24-1-PL	24" White Pleated Bouffant, 100/BG 10BG/CS
DBBL-21-1-PL	21" Blue Pleated Bouffant, 100/BG 10BG/CS
DBBL-24-1-PL	24" Blue Pleated Bouffant, 100/BG 10BG/CS

ALL SAFETY ZONE POLYPROPYLENE BOUFFANT CAPS ARE LATEX FREE

PLEATED BOUFFANT CAP



PLEATED BOUFFANT CAPS (BAGGED)



DBWH-(SIZE)-1



DBWH-(SIZE)-1-PL



DBBL-(SIZE)-1-PL





# CAPS



DBYE-21-1	21" Yellow Bouffant, 100/BG 10BG/CS
DBYE-24-1	24" Yellow Bouffant, 100/BG 10BG/CS
DBGR-19-1	19" Green Bouffant, 100/BG 10BG/CS
DBGR-21-1	21" Green Bouffant, 100/BG 10BG/CS
DBGR-24-1	24" Green Bouffant, 100/BG 10BG/CS
DBGR-21-5	21" Green Bouffant, 100/BG 5BG/CS
DBGR-24-5	24" Green Bouffant, 100/BG 5BG/CS
DBOR-21-1	21" Orange Bouffant 100/BG 10BG/CS
DBOR-24-1	24" Orange Bouffant, 100/BG 10BG/CS

DBRE-21-1	21" Red Bouffant, 100/BG 10BG/CS
DBRE-24-1	24" Red Bouffant, 100/BG 10BG/CS
DBBL-19-1	19" Blue Bouffant, 100/BG 10BG/CS
DBBL-21-1	21" Blue Bouffant, 100/BG 10BG/CS
DBBL-24-1	24" Blue Bouffant, 100/BG 10BG/CS
DBBL-19-5	19" Blue Bouffant, 100/BG 5BG/CS
DBBL-21-5	21" Blue Bouffant, 100/BG 5BG/CS
DBBL-24-5	24" Blue Bouffant, 100/BG 5BG/CS

ALL SAFETY ZONE POLYPROPYLENE BOUFFANT CAPS ARE LATEX FREE

DBYE-(SIZE)-1

DBGR-(SIZE)-1

DBBL-(SIZE)-1

DBOR-(SIZE)-1

DBRE-(SIZE)-1



# LAB COATS

## ISOLATION GOWNS

### LAB COATS

DLWH-(SIZE)-E-EW	White Polypropylene Economy Lab Coat, 3 Pockets, Elastic Wrists 30/CS, SM-5X
DLWH-(SIZE)-ENP-EW	White Polypropylene Economy Lab Coat, No Pockets, Elastic Wrists 30/CS, SM-5X
DLBL-(SIZE)-E-EW	Blue Polypropylene Economy Lab Coat, 3 Pockets, Elastic Wrists 30/CS, MD-4X
DLBL-(SIZE)-ENP-EW	Blue Polypropylene Economy Lab Coat, No Pockets, Elastic Wrists 30/CS, MD-3X
DLWH-(SIZE)	White Polypropylene Lab Coat, 3 Pockets & Elastic Wrists, 30/CS, SM-5X
DLBL-(SIZE)	Blue Polypropylene Lab Coat, 3 Pockets & Elastic Wrists, 30/CS, MD-4X
DLWH-(SIZE)-NP	White Polypropylene Lab Coat, No Pockets & Elastic Wrists, 30/CS, SM-5X
DLBL-(SIZE)-NP	Blue Polypropylene Lab Coat, No Pockets & Elastic Wrists, 30/CS, MD-3X
DLWH-(SIZE)-SMS50	White 50 Gram SMS Polypropylene Lab Coat, Knit Wrist, Collar & 3 Pockets, 30/CS, LG-5X
DLBL-(SIZE)-SMS50	Blue 50 Gram SMS Polypropylene Lab Coat, Knit Wrist, Collar & 3 Pockets, 30/CS, SM-5X
DLWH-(SIZE)-BB	White Breathable Microporous Lab Coat, Elastic Wrists & 3 Pockets, Individually Bagged, 30/CS, MD-5X
TY-14301-(SIZE)	White Dupont® Tyvek® Lab Coat, 3 Pockets, 30/CS, SM-2X

### ISOLATION GOWNS

DGIH-XL-Y	Yellow Polypropylene Isolation Gown, Ties, 50/CS, XL
-----------	--

DGIH-XL-Y



DLWH-(SIZE)-E-EW



DLWH-(SIZE)



DLBL-(SIZE)



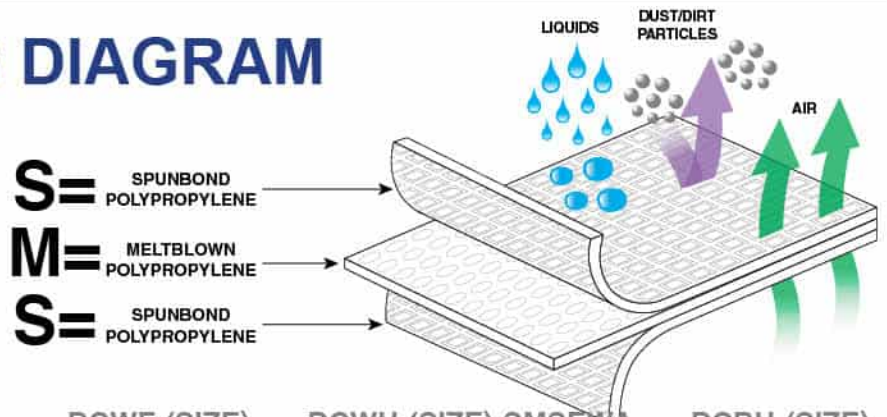
DLBL-(SIZE)-SMS50



# COVERALLS

DCWH-(SIZE)	White Disposable Polypropylene Coverall, No Hood or Elastic, 25/CS, MD-5X
DCWH-(SIZE)-40EWA	White 40 Gram Disposable Polypropylene Coverall, Elastic Wrists & Ankles, 25/CS, SM-5X
DCWF-(SIZE)-40	White 40 Gram Disposable Polypropylene Coverall, Hood, Boots & Elastic Wrist, 25/CS, LG-5X
DCWF-(SIZE)	White Disposable Polypropylene Coverall, Hood, Boots & Elastic Wrist, 25/CS, MD-5X
DCWH-(SIZE)-SMSEWA	White SMS Polypropylene Coverall, Elastic Wrists & Ankles, 25/CS, MD-5X
DCBH-(SIZE)	Blue Disposable Polypropylene Coverall, No Hood or Elastic Wrists, 25/CS, MD-5X
DCBF-(SIZE)	Blue Disposable Polypropylene Coverall, Hood, Boots & Elastic Wrist, 25/CS, MD-4X

## SMS DIAGRAM



DCWH-(SIZE)

DCWH-(SIZE)-40EWA

DCWF-(SIZE)

DCWH-(SIZE)-SMSEWA

DCBH-(SIZE)

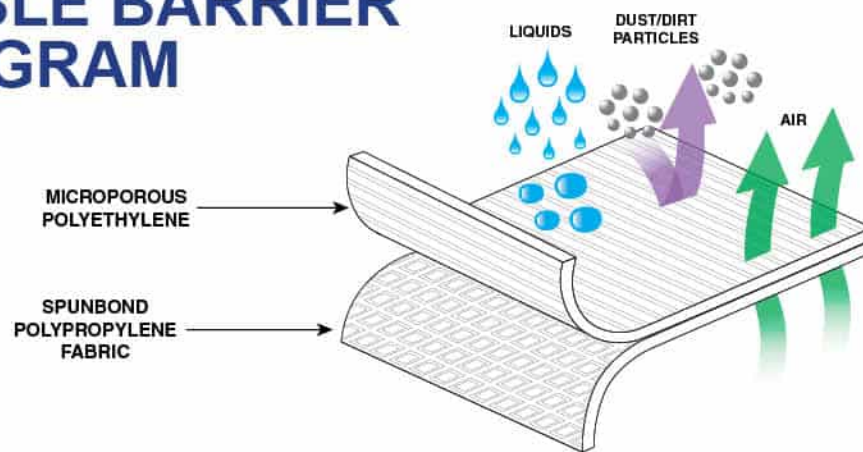


# COVERALLS

## BREATHABLE BARRIER MICROPOROUS COVERALLS

DCWH-(SIZE)-BB	White Breathable Microporous Coverall, No Hood or Elastic, Individually Bagged, 25/CS, SM-5X
DCWH-(SIZE)-BB-EWA	White Breathable Microporous Coverall, Elastic Wrists & Ankles, Individually Bagged, 25/CS, SM-5X
DCWH-(SIZE)-BB-HEWA	White Breathable Microporous Coverall, Hood, Elastic Wrists & Ankles, Individually Bagged, 25/CS, MD-5X
DCWF-(SIZE)-BB	White Breathable Microporous Coverall, Hood, Boots & Elastic Wrists, Individually Bagged, 25/CS, MD-5X
DLWH-(SIZE)-BB	White Breathable Microporous Lab Coat, Elastic Wrists & 3 Pockets, Individually Bagged, 30/CS, MD-5X

## BREATHABLE BARRIER DIAGRAM



DCWH-(SIZE)-BB-EWA



DCWF-(SIZE)-BB



DLWH-(SIZE)-BB



# TYVEK

## DUPONT™ TYVEK® COVERALLS & LAB COAT

TY-14301-(SIZE)	White Dupont™ Tyvek® Lab Coat, 3 Pockets, 30/CS, SM-2X
TY-14120-(SIZE)	White Dupont™ Tyvek® Coverall, No Hood or Elastic Wrists, 25/CS, SM-4X
TY-14125-(SIZE)	White Dupont™ Tyvek® Coverall, Elastic Wrists & Ankles, 25/CS, SM-4X
TY-14127-(SIZE)	White Dupont™ Tyvek® Coverall, Hood, Elastic Wrists & Ankles, 25/CS, MD-4X
TY-14261-(SIZE)	White Dupont™ Tyvek® Coverall, Hood & Boots, 25/CS, MD-5X



# Tyvek® Coveralls Diagram



Open Wrists



Elastic Wrists

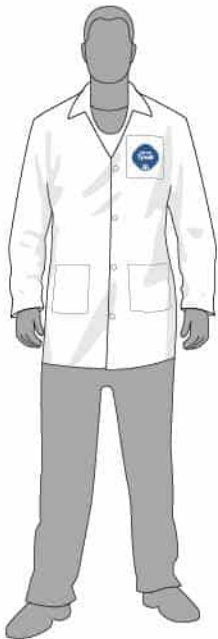


Open Ankles



Elastic Ankles

TY-14301-(SIZE)



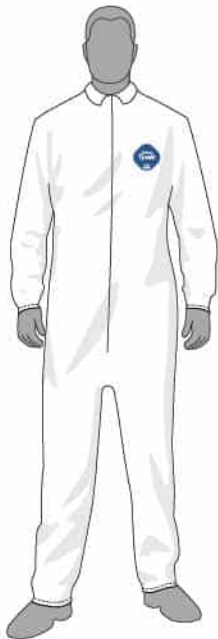
Lab Coat with Open Wrists & Ankles

TY-14120-(SIZE)



Coverall with Open Wrists & Ankles

TY-14125-(SIZE)



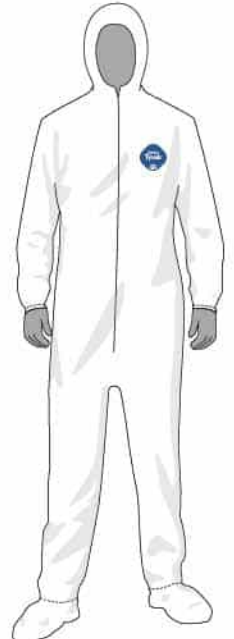
Coverall with Elastic Wrists & Ankles

TY-14127-(SIZE)



Coverall with Elastic Wrists & Ankles with Hood

TY-14261-(SIZE)



Coverall with Elastic Wrists & Ankles with Hood & Boots



# DISPOSABLE

DAP1.25-24X42	1 MIL 24"x42" White Polyethylene Apron, Individually Bagged, 100/BX 10BX/CS
DAP1.25-28X46	1 MIL 28"x46" White Polyethylene Apron, Individually Bagged, 100/BX 10BX/CS
DAP1.25-28X46B	1 MIL 28"x46" White Polyethylene Apron, Bulk Packed, 100/BG 10BG/CS
DAP1.25-28X46BL	1 MIL 28"x46" Blue Polyethylene Apron, Bulk Packed, 100/BG 10BG/CS
DAP2.0-28X46-D	2 MIL 28"x46" White Polyethylene Apron, Dispenser Boxed, 100/BX 5BX/CS
DAP2.0-28X46DBL	2 MIL 28"x46" Blue Polyethylene Apron, Dispenser Boxed, 100/BX 5BX/CS
D-100DAP	Wall Mount Wire Rack for DAP10 Aprons

ALL SAFETY ZONE APPAREL COMPLIES WITH THE FFDCA FOR FOOD CONTACT AND ARE DEHP FREE

DAP1.25-24X46BL



DAP1.25-24X46



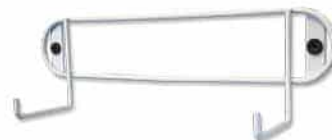
DAP10-28X46-BL  
(HEADER)



DAP10-28X46-WH  
(HEADER)



D-100DAP



DAP1.25-28X46B



DAP2.0-28X46-D



DAP1.25-24X42  
DAP1.25-28X46



DAP2.0-28X46DBL



# APRONS

DAP10-28X46-WH	10 MIC 28"x46" White High Density Polyethylene Apron, 100/Header 10Headers/CS
DAP10-28X46-BL	10 MIC 28"x46" Blue High Density Polyethylene Apron, 100/Header 10Headers/CS
DAP10-28X46-RD	10 MIC 28"x46" Red High Density Polyethylene Apron, 100/Header 10Headers/CS
DAP10-28X46-YE	10 MIC 28"x46" Yellow High Density Polyethylene Apron, 100/Header 10Headers/CS
DAPP-28X36-100	28"x36" White Polypropylene Apron, 100/Case
DAPP-28X36-PE	28"x36" White Polyethylene Coated Polypropylene Apron, 100/CS
CPE-(SIZE)-PE	Blue Cast Polyethylene "CPE" Apron, Thumb Hole Sleeves, 100/CS, LG or XL

ALL SAFETY ZONE APPAREL COMPLIES WITH THE FFDCA FOR FOOD CONTACT AND ARE DEHP FREE

DAP10-28X46-WH



DAP10-28X46-BL



DAP10-28X46-RD



DAP10-28X46-YE



CPE-(SIZE)-PE



# APRONS

## VINYL

DAV04-35X45-DC	4 MIL 35"X45" Blue Die Cut Vinyl Apron, 6 DZ/CS
DAV06-35X45-DC	6 MIL 35"X45" Blue Die Cut Vinyl Apron, 6 DZ/CS
DAV06-35X45	6 MIL 35"X45" Blue Raw Edge Vinyl Apron, String Ties, 6 DZ/CS
DAV06-35X45WH	6 MIL 35"X45" Raw Edge White Vinyl Apron, String Ties, 6 DZ/CS
DAV08-35X45WH	8 MIL 35"X45" White Die Cut Vinyl Apron, 6 DZ/CS
DAV20-36X50	.20 MM 36"X50" Green PVC Apron, Stomach Patch, Sold Individually, 96/CS
DAV35-35X50	.35 MM 35"X50" Yellow Vinyl Reinforced, Polyester Apron, Sold Individually, 50/CS

DAV04-35X45-DC  
DAV06-35X45-DC

DAV06-35X45

DAV08-35X45WH

DAV20-36X50

DAV35-35X50





# HEAVY DUTY APRONS

## HYCAR

AP-WH-45MT	14 Oz. 36"x45" Medium Weight White Hycar Apron, Four Grommets & String Ties, 12/CS
AP-WH-48MT	14 Oz. 36"x48" Medium Weight White Hycar Apron, Four Grommets & String Ties, 12/CS
AP-WH-48HT	16 Oz. 36"x48" Heavy Weight White Hycar Apron, Four Grommets & String Ties, 12/CS
AP-MH-48MT	14 Oz. 36"x48" Medium Weight Maroon Hycar Apron, Four Grommets & String Ties, 12/CS
AP-MH-48HT	16 Oz. 36"x48" Heavy Weight Maroon Hycar Apron, Four Grommets & String Ties, 12/CS
AP-BH-45MT	14 Oz. 36"x45" Medium Weight Black Hycar Apron, Four Grommets & String Ties, 12/C
AP-BH-48MT	14 Oz. 36"x48" Medium Weight Black Hycar Apron, Four Grommets & String Ties, 12/CS
AP-YH-45MT	14 Oz. 36"x45" Medium Weight Yellow Hycar Apron, Four Grommets & String Ties, 12/CS
AP-YH-48MT	14 Oz. 36"x48" Medium Weight Yellow Hycar Apron, Four Grommets & String Ties, 12/CS
AP-YH-45HT	16 Oz. 36"x45" Heavy Weight Yellow Hycar Apron, Four Grommets & String Ties, 12/CS
AP-YH-48HT	16 Oz. 36"x48" Heavy Weight Yellow Hycar Apron, Four Grommets & String Ties, 12/CS
AP-YH-48HBP	16 Oz. 36"x48" Heavy Weight Yellow Hycar Apron, 26 Oz. Belly Patch, Four Grommets & String Ties, 12/CS
AP-YH-48HBBP	16 Oz. 36"x48" Heavy Weight Yellow Hycar Apron, 26 Oz. Belly Patch, Adjustable Buckle On Neck, Four Grommets & String Ties, 12/CS

## NEOPRENE

AP-BN-45MT	14 Oz. 36"x45" Medium Weight Black Neoprene Apron, Four Grommets & String Ties, 12/CS
AP-BN-45HT	18 Oz. 36"x45" Heavy Weight Black Neoprene Apron, Four Grommets & String Ties, 12/CS

## BONING APRON

AP-BON-APN	3/8" Thick 14"x18" White Boning Apron, PVC on Two Sides of Hemp & Adjustable Buckle Strap, 12/CS (To be worn under an apron)
------------	--

YELLOW  
HYCAR APRON



WHITE  
HYCAR APRON



MAROON  
HYCAR APRON



BLACK  
NEOPRENE APRON



YELLOW  
HYCAR APRON



WHITE  
BONING APRON



# WELDERS

## DRIVERS GLOVES

GLW1-MN-W8C	"A/B" Grade Gunn Cut Gray Leather Welders, 1DZ Pair/Bag 6DZ/CS, Mens
GLW1-MN-W9A	"A" Grade Gunn Cut Blue Leather Welders, Kevlar Stitching, 1DZ Pair/Bag 6DZ/CS, Mens
GLD1-(SIZE)-S8C	"A/B" Grade Gunn Cut Gray Leather Drivers, Straight Thumb, 1DZ Pair/Bag 10DZ/CS, SM-XL
GLD5-(SIZE)-P0B	"A/B" Top Grain Plg Gunn Cut Drivers, Keystone Thumb, 1DZ Pair/Bag 10DZ/CS, SM-2X
GLD2-(SIZE)-P0B	"A/B" Top Grain Cow Gunn Cut Drivers, Keystone Thumb, 1DZ Pair/Bag 10DZ/CS, SM-3X

GLW1-MN-W8C



GLW1-MN-W9A



GLD1-(SIZE)-S8C



GLD5-(SIZE)-P0B



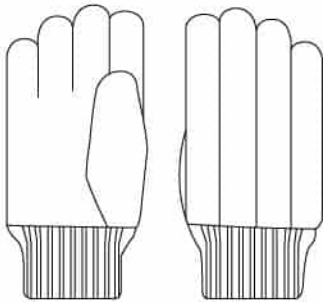
GLD2-(SIZE)-P0B



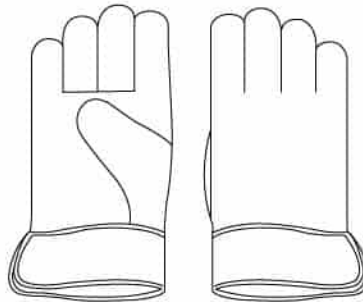
# LEATHER GLOVES

GLP1-(SIZE)-A1C	"A/B" Grade, Clute Cut Leather Palm, Knit Wrist, 20DZ/CS, Mens or Womens
GLP1-(SIZE)-C2C	"A/B" Grade, Gunn Cut Leather Palm, Pasted Safety Cuff, 10DZ/CS, Mens or Womens
GLP1-(SIZE)-B2D	"B" Grade, Gunn Cut Leather Palm, Rubberized Safety Cuff, 10DZ/CS, Mens or Womens
GLP1-MN-H2C	"A/B" Grade, Gunn Cut Leather Palm, Blue & Red Cotton, Knit Wrist, 10DZ/CS, Mens
GLP1-(SIZE)-B1C	"A/B" Grade, Gunn Cut Leather Palm, Rubberized Safety Cuff, 10DZ/CS, Mens, Womens or XL
GLP1-MN-B2B	"A" Grade, Gunn Cut Leather Palm, Rubberized Safety Cuff, 10DZ/CS, Mens
GLP1-MN-B7C	"A" Grade, Gunn Cut Leather Palm, Orange Rubberized Safety Cuff, 10DZ/CS, Mens
GLP1-MN-B3A	"Premium A" Grade, Gunn Cut Leather Palm, Rubberized Safety Cuff, 10DZ/CS, Mens
GLF1-MN-B1C	"A/B" Grade, Gunn Cut Leather Palm, Full Leather Back, Rubberized Safety Cuff, 10DZ/CS, Mens

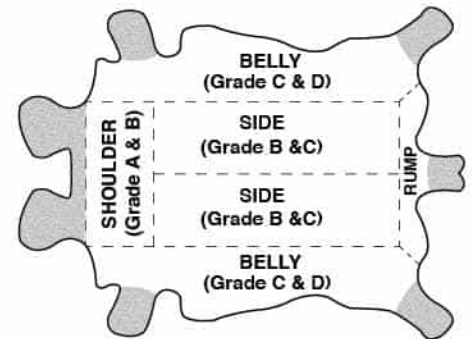
## CLUTE CUT



## GUNN CUT



## GRADES OF LEATHER



GLP1-(SIZE)-A1C



GLP1-MN-H2C



GLP1-(SIZE)-B2D



# LEATHER

GLP1-(SIZE)-G1C	"A/B" Grade Gunn Cut Leather, 4½" Rubberized Gauntlet Cuff, 1DZ Pair/Bag 10DZ/CS, Mens or XL
GLP1-MN-G2B	"A" Grade Gunn Cut Leather, 4½" Rubberized Gauntlet Cuff, 1DZ Pair/Bag 10DZ/CS, Mens
GLF1-MN-G1C	"A/B" Grade Gunn Cut Full Leather Back, 4½" Rubberized Gauntlet Cuff, 1DZ Pair/Bag 10DZ/CS, Mens
GLR1-MN-B2S	"A/B" Grade Gunn Cut Double Reinforced Leather Palm, Rubberized Cuff, 1DZ Pair/Bag 10DZ/CS, Mens
GLR1-MN-B1S	"A/B" Grade Gunn Cut Double Reinforced Leather Palm, Rubberized Cuff, 1DZ Pair/Bag 10DZ/CS, Mens
GLR1-MN-B1C	"A/B" Grade Double Reinforced Leather Palm, Rubberized Safety Cuff, 1DZ Pair/Bag 10DZ/CS, Mens
GLR1-MN-B2B	"A" Grade Double Reinforced Leather Palm, Rubberized Safety Cuff, 1DZ Pair/Bag 10DZ/CS, Mens

GLP1-(SIZE)-G1C



GLP1-MN-G2B



GLF1-MN-G1C



GLR1-MN-B2S



GLR1-MN-B1S



GLR1-MN-B1C



# GLOVES

GLP1-(SIZE)-B1C



GLP1-MN-B2B



GLP1-MN-B7C



GLP1-MN-B3A



GLF1-MN-B1C

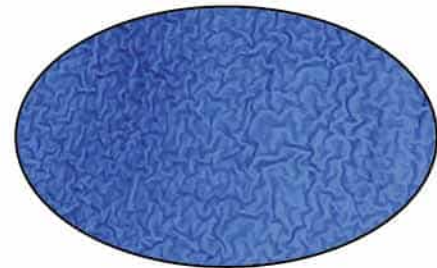


# COATED KNIT

GSPC-(SIZE)-2C	Blue Latex Coated String Knit, 1DZ Pair/Bag 18DZ/CS, MD-XL
GRSL-(SIZE)	Premium Blue Latex Coated Gray String Knit, ANSI Cut Level 2, EN388 Cut Level 2 1DZ Pair/Bag 6DZ/CS, SM-XL
G-NIDEX-(SIZE)	Black Nitrile Coated Nylon Knit, EN388 Cut Level 1, 1DZ Pair/Bag 6DZ/CS, SM-2X
G-NIDEX-(SIZE)-GF	Gray Foam Nitrile Coated Nylon Knit, EN388 Cut Level 1, 1DZ Pair/Bag 6DZ/CS, XS-2X
GMPU-(SIZE)-4-GY-GY	Gray Polyurethane Coated Gray Nylon Knit, EN388 Cut Level 1, 1DZ Pair/Bag 6DZ/CS, XS-2X
GS13-(SIZE)-CYPV	Gray Polyurethane Coated Cut-Resistant High-Pressure Polyethylene "HPPE" Knit, EN388 Cut Level 3/D, ANSI Cut Level 3, Sold by the Pair, 6DZ/CS, XS-2X
G-HIDEX-(SIZE)	High Dexterity Glove, Stretch Nylon Back & Vibration Absorbing Palm, Sold by the Pair, 50PRS/CS, XS-2X
G-HIDEX-(SIZE)-2	High Dexterity Glove, Stretch Nylon Back & Single Layer Palm, Sold by the Pair, 50PRS/CS, SM-2X



GSPC-(SIZE)-2C



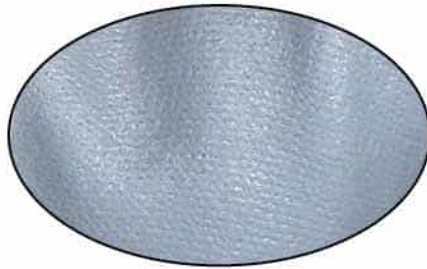
GRSL-(SIZE)



# GLOVES



G-NIDEX-(SIZE)



G-NIDEX-(SIZE)-GF



GNPU-(SIZE)-4-GY-GY



GS13-(SIZE)-CYPV



G-HIDEX-(SIZE)



G-HIDEX-(SIZE)-2



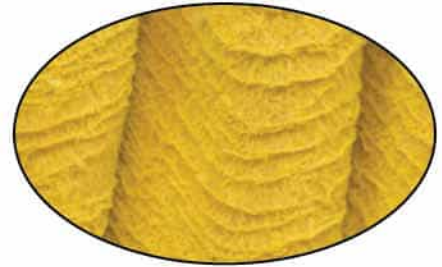
# COATED KNIT GLOVES

GRKW-MN-1	Yellow Crinkle Finish Latex, EN388 Cut Level 1, Knit Wrist, 1DZ Pair/Bag 10DZ/CS, Mens
GRSC-MN-1	Yellow Crinkle Finish Latex, EN388 Cut Level 1, Safety Cuff, 1DZ Pair/Bag 10DZ/CS, Mens
GNKW-MN-12	Blue Nitrile Dipped Smooth Finish, Knit Wrist, 1DZ Pair/Bag 12DZ/CS, Mens
GNSC-MN-12	Blue Nitrile Dipped Smooth Finish, Safety Cuff, 1DZ Pair/Bag 12DZ/CS, Mens

GRKW-MN-1



GRSC-MN-1



GNKW-MN-12



GNSC-MN-12

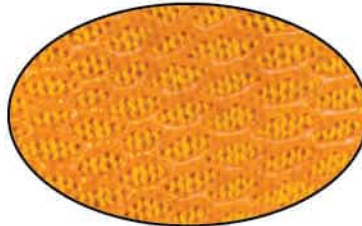




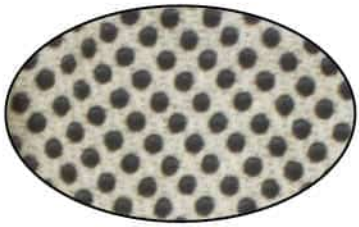
# DOTTED GLOVES

GJBC-KW-1-PD	Black PVC Dotted Palm Brown Jersey, 1DZ Pair/Bag 25DZ/CS, LG
GSCC-(SIZE)	PVC Criss-Cross Grip on Orange Nylon Knit, 1DZ Pair/Bag 12DZ/CS, SM-XL
GSBS-(SIZE)-2C-20	Black PVC Dotted 1 Sided Cotton Polyester String Knit, 1DZ Pair/Bag 20DZ/CS, WN/MN
GSBS-(SIZE)-2P-20	Premium Black PVC Dotted 1 Sided Cotton Polyester String Knit, 1DZ Pair/Bag 20DZ/CS, WN-MN
GSBD-(SIZE)-2C-20	Black PVC Dotted 2 Sided Cotton Polyester String Knit, 1DZ Pair/Bag 20DZ/CS, WN/MN
GSBD-(SIZE)-2P-20	Premium Black PVC Dotted 2 Sided Cotton Polyester String Knit, 1DZ Pair/Bag 20DZ/CS, WN/MN
GCD8-(SIZE)-1C	Black PVC Dotted Cotton Polyester Canvas Clute Cut, Knit Wrist, 1DZ Pair/Bag 25DZ/CS, MN

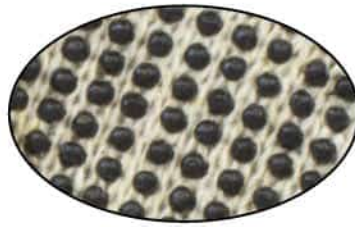
GJBC-KW-1-PD



GSCC-(SIZE)



GCD8-(SIZE)-1C



GSBS-(SIZE)-2C-20



GSBD-(SIZE)-2P-20



# STRING KNIT GLOVES

GSLW-(SIZE)-2C-NRB	Light Weight Cotton Polyester String Knit, 1DZ Pair/Bag 40DZ/CS, WN-MN
GSLW-(SIZE)-2P-NRB	Premium Light Weight Cotton Polyester String Knit, 1DZ Pair/Bag 40DZ/CS, WN-MN
GSMW-XS-2C	Medium Weight Cotton Polyester String Knit, 1DZ Pair/Bag, 25DZ/CS, XS
GSMW-(SIZE)-2C-NRB	Medium Weight Cotton Polyester String Knit, 1DZ Pair/Bag 25DZ/CS, Cut Level-8, WN-MN
GSMW-(SIZE)-2P-NRB	Premium Medium Weight Cotton Polyester String Knit, 1DZ Pair/Bag 25DZ/CS, WN-MN
GSHW-(SIZE)-1C-NRB	Heavy Weight Cotton Polyester String Knit, 1DZ Pair/Bag 25DZ/CS, WN-MN
GSMW-(SIZE)-2C-BW70	Bright White Medium Weight Cotton Polyester String Knit, 1DZ Pair/Bag 25DZ/CS, WN-MN
GSMW-(SIZE)-2C-GY	Gray Medium Weight Cotton Polyester String Knit, 1DZ Pair/Bag 30DZ/CS, WN-MN
GDBG-(SIZE)	Cut-Resistant String Knit, Spectra Wrapped Stainless Steel Core, Sold by the Glove, ANSI Cut Level-8, XS-XL

GSLW-(SIZE)-2C-2NRB  
GSLW-(SIZE)-2P-2NRB



GSMW-(SIZE)-2C-NRB  
GSMW-(SIZE)-2P-NRB



GSHW-(SIZE)-1C-NRB



GSMW-(SIZE)-2C-BW70



GSMW-(SIZE)-2C-GY



# INSPECTORS GLOVES

GSPN-A	Thermal Glove LIner/Inspectors Glove, One Size Fits Most, 25DZ/Bag, 2 Bags/CS
GILW-(SIZE)-1P	100% Cotton Lisle Light Weight Inspector Glove, 1DZ Pair/Bag 100DZ/CS, WN-MN
GIMW-(SIZE)-1SP	100% Cotton Lisle Medium Weight Inspectors Glove, 1DZ Pair/Bag 100DZ/CS, WN-MN
GI4W-(SIZE)-4-100	Synthetic Mens Inspectors, 40 Denier, 1DZ Pair/Bag 100DZ/CS, MD-XL
GI4L-(SIZE)-4-100	Synthetic Womens Inspectors, 40 Denier, 1DZ Pair/Bag 100DZ/CS, SM-LG
GILW-M2-1P	12" 100% Cotton Lisle Light Weight Inspector Glove, 1DZ Pair/Bag 100DZ/CS, LG
GILW-M4-1P	14" 100% Cotton Lisle Light Weight Inspector Glove, 1DZ Pair/Bag 100DZ/CS, LG
GIMW-M2-1P	12" 100% Cotton Lisle Medium Weight Inspector Glove, 1DZ Pair/Bag 100DZ/CS, LG
FPF-(SIZE)	Powder Free Latex Finger Cots, 5 Gross Per Bag, (720/BG) 40Bags/CS, SM-XL
FPB-(SIZE)	Powder Free Latex Finger Cots, 1 Gross Per Box, (144/BX) 200Boxes/CS, SM-XL

GSPN-A



GILW-(SIZE)-1P



GIMW-(SIZE)-1SP



GI4W-(SIZE)-4-100  
GI4L-(SIZE)-4-100



GILW-M2-1P  
GIMW-M2-1P



FPF-(SIZE)  
FPB-(SIZE)



# INSULATED GLOVES

GJBC-MN-1-RL-12	Insulated Cotton Polyester Brown Jersey, Red Jersey Lining, 1DZ Pair/Bag 12DZ/CS, Mens
GLL1-(SIZE)-P7A-T	Split Cow Leather Drivers, Keystone Thumb, Thinsulate Lining, 1DZ Pair/Bag 6DZ/CS, LG-XL
GLL1-XL-B3A	Premium Grade Leather, Rubberized Safety Cuff, Jersey Lining, 1DZ Pair/Bag 10DZ/CS, XL

GJBC-(SIZE)-MN-1-RL-12



GLL1-(SIZE)-P7A-T



GLL1-(XL)-B3A



# COTTON JERSEY & CANVAS GLOVES

GJWR-(SIZE)-1P	Reversible 100% Cotton Natural Jersey, 1DZ Pair/Bag 25DZ/CS, Mens or Womens
GJBC-(SIZE)-1P	Brown Jersey Clute Cut, Knit Wrist, 1DZ Pair/Bag 25DZ/CS, Mens or Womens
GC08-(SIZE)-2C	8 Oz. Cotton Polyester Canvas Clute Cut, Knit Wrist, 1DZ Pair/Bag 25DZ/CS, Mens or Womens
GC08-(SIZE)-1P	8 Oz. 100% Cotton Canvas Clute Cut, Knit Wrist, 1DZ Pair/Bag 25DZ/CS, Mens or Womens
GC10-MN-1P	10 Oz. 100% Cotton Canvas Clute Cut, Knit Wrist, 1DZ Pair/Bag 25DZ/CS, Mens
GC12-MN-1P	12 Oz. 100% Cotton Canvas Clute Cut, Knit Wrist, 1DZ Pair/Bag 25DZ/CS, Mens
PAD-9X11	9" X 11" Terry Cloth Baking Pad, Double Thick with Elastic Strap, Sold by the Dozen

GJWR-(SIZE)-1P



GJBC-(SIZE)-1C



PAD-9X11



GC08-(SIZE)-1P



GC10-(SIZE)-1P



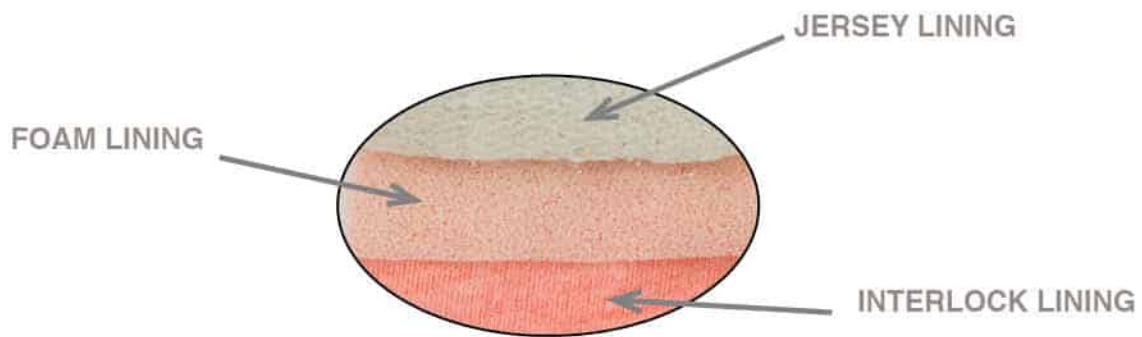
GC12-(SIZE)-1P



# ORANGE PVC GLOVES

GPOF-KW-2R-3	Orange PVC, Jersey Insulated Foam Lining, Knit Wrist, Rough Finish, 1DZ Pair/Bag 3DZ/CS
GPOF-SC-2R-3	Orange PVC, Jersey Insulated Foam Lining, Safety Cuff, Rough Finish, 1DZ Pair/Bag 3DZ/CS
GPOF-10-2R-3	10" Orange PVC, Jersey Insulated Foam Lining, Rough Finish, 1DZ Pair/Bag 3DZ/CS
GPOF-12-2R-3	12" Orange PVC, Jersey Insulated Foam Lining, Rough Finish, 1DZ Pair/Bag 3DZ/CS
GPOF-14-2R-3	14" Orange PVC, Jersey Insulated Foam Lining, Rough Finish, 1DZ Pair/Bag 3DZ/CS

## 3 LAYER INSULATED PVC



GPOF-KW-2R-3



GPOF-SC-2R-3



GPOF-10-2R-3  
GPOF-12-2R-3  
GPOF-14-2R-3



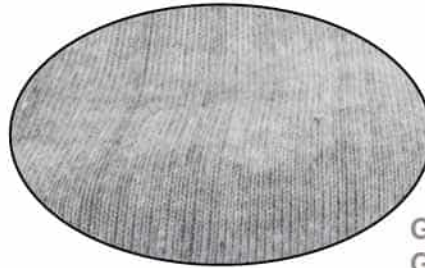
# BLACK PVC GLOVES

GPBJ-KW-2R-6	Black Double Dipped PVC, Jersey Lining, Knit Wrist, Rough Finish, 1DZ Pair/Bag 6DZ/CS
GPBI-KW-1P-1	Black Single Dipped PVC, Interlock Lining, Knit Wrist, Pimple Finish, 1DZ Pair/Bag 10DZ/CS
GPBI-KW-1S-1	Black Single Dipped PVC, Interlock Lining, Knit Wrist, Smooth Finish, 1DZ Pair/Bag 10DZ/CS
GPBJ-10-2R-6	10" Black Double Dipped PVC, Jersey Lining, Rough Finish, 1DZ Pair/Bag 6DZ/CS
GPBJ-12-2R-6	12" Black Double Dipped PVC, Jersey Lining, Rough Finish, 1DZ Pair/Bag 6DZ/CS
GPBJ-14-2R-6	14" Black Double Dipped PVC, Jersey Lining, Rough Finish, 1DZ Pair/Bag 6DZ/CS
GPBJ-18-2R-6	18" Black Double Dipped PVC, Jersey Lining, Rough Finish, 1DZ Pair/Bag 6DZ/CS
GPBI-12-1P-1	12" Black Single Dipped PVC, Interlock Lining, Pimple Finish, 1DZ Pair/Bag 10DZ/CS
GPBI-10-1S-1	10" Black Single Dipped PVC, Interlock Lining, Smooth Finish, 1DZ Pair/Bag 10DZ/CS
GPBI-12-1S-1	12" Black Single Dipped PVC, Interlock Lining, Smooth Finish, 1DZ Pair/Bag 10DZ/CS
GPBI-14-1S-1	14" Black Single Dipped PVC, Interlock Lining, Smooth Finish, 1DZ Pair/Bag 10DZ/CS
GPBI-18-1S-1	18" Black Single Dipped PVC, Interlock Lining, Smooth Finish, 1DZ Pair/Bag 10DZ/CS

JERSEY LINING



INTERLOCK LINING



GPBJ-10-2R-6  
 GPBJ-12-2R-6  
 GPBJ-14-2R-6  
 GPBJ-18-2R-6

GPBI-10-1S-1  
 GPBI-12-1S-1  
 GPBI-14-1S-1  
 GPBI-18-1S-1

GPBJ-KW-2R-6



# HEAT RESISTANT GLOVES

<b>GHBT-18-1C</b>	18 Oz. Cotton Hot Mill, Band Top, 1DZ Palr/Bag 10DZ/CS, One Size Fits All
<b>GHBT-24-1C</b>	24 Oz. Cotton Hot Mill, Band Top, 1DZ Palr/Bag 10DZ/CS, One Size Fits All
<b>GHBT-26-1C</b>	26 Oz. Cotton Hot Mill, Band Top, 1DZ Palr/Bag 10DZ/CS, One Size Fits All
<b>GHGT-24-1C</b>	24 Oz. Cotton Hot Mill, 4½" Gauntlet Cuff, 1DZ Palr/Bag 10DZ/CS, One Size Fits All
<b>GT24-LG-12</b>	24 Oz. Terry Cloth, Knit Wrist, 1DZ Palr/Bag 10DZ/CS, One Size Fits All
<b>GHKG-18-1C</b>	18 Oz. Golden Fleece Chore, Knit Wrist, 1DZ Palr/Bag 10DZ/CS, One Size Fits All

**GHBT-18-1C  
GHBT-24-1C  
GHBT-26-1C**



**GHGT-24-1C**



**GT24-LG-12**



**GHKG-18-1**





# RESPIRATORS MASKS

RS-700	Pleated Ear Loop Procedural Mask, 50/BX 10BX/CS
RS-700-Y	Youth Size Pleated Ear Loop Procedural Mask, 50/BX 10BX/CS
RS-810	White Cone Non-Rated Nuisance Level Dust Mask, 50/BX 20BX/CS
RS-700-BFE	Pleated Ear Loop Procedural Mask, Meets FF&BFE Standards, 50/BX 10BX/CS
RS-900-N95	Safety Zone Brand NIOSH Approved Respirator, 20/BX 12BX/CS
RS-920-EV-N95	Safety Zone Brand NIOSH Approved Respirator, Exhalation Valve, 10/BX 12BX/CS
RM-4200N95	Moldex® Brand NIOSH Approved AirWave Particulate Respirator, 10/BX 8BX/CS, MD/LG
RM-2200N95	Moldex® Brand NIOSH Approved Respirator, 20/BX 12BX/CS
RM-2300N95	Moldex® Brand NIOSH Approved Respirator, Exhalation Valve, 10/BX 10BX/CS
RM-8102	Moldex® Brand Pre-Assembled Half Mask Respirator, Organic Vapor Cartridge, Sold by the Each



RS-700-Y



RS-700



RS-810



RS-900-N95



RS-920-EV-N95



RM-4200N95



RM-2200N95



RM-2300N95



RM-8102



# PROTECTIVE

## EYE WEAR

ES-21	Black, Blue or USA Frame, Clear or Smoke Lens & Adjustable Temple, ANSI Z87+ Approved, 12Pair/BX
ES-32	Wrap Around Style, Black, Blue or USA Frame, Clear, Smoke or Indoor/ Outdoor Lens & Articulating Adjustable Temple, ANSI Z87+ Approved, 12Pair/BX
ES-41	Wrap Around Style, Black Frame, Clear, Smoke or Indoor/ Outdoor Lens & Adjustable Temple, ANSI Z87+ Approved, 12Pair/BX
ES-51	Wrap Around Style, Clear or Smoke Frame, Clear, Smoke or Indoor/ Outdoor Lens, ANSI Z87+ Approved, 12Pair/BX
ES-VS	Visitor Specs, Clear Frame & Clear Lens, ANSI Z87+ Approved, 12Pair/BX
ES-GP	Perforated Impact Goggle, ANSI Z87+ Approved, 36Pair/BX 4BX/CS
ES-GC	Chemical Impact Goggle, Indirect Ventilation, ANSI Z87+ Approved, 36Pair/BX 4BX/CS
ES-GC/AF	Chemical Impact Goggle, Indirect Ventilation & Anti Fog Lens, ANSI Z87+ Approved, 36Pair/BX 4BX/CS

## LENS CLEANING

ES-LCT	Safety Zone Pre Moistened Anti-Fog Lens Cleaning Towelettes, 100BX 10BX/CS
ES-LCS-8	Safety Zone Lens Cleaning Station, 8 Oz. Anti-Fog Lens Cleaning Solution, 600Tissues/BX 10BX/CS
ES-LCS-16	Safety Zone Lens Cleaning Station, 16 Oz. Anti-Fog Lens Cleaning Solution, 1,200Tissues/BX 4BX/CS

ES-LCT



ES-LCS-8



ES-LCS-16



# EYE WEAR

ES-21BKCL



ES-21USACL



ES-21BKSM



ES-32BKCL



ES-32BKIO



ES-32BKSM



ES-41BKCL



ES-41BKIO



ES-41BKSM



ES-51FTCL



ES-51CLIO



ES-51BKSM



ES-VS



ES-GP



ES-GC  
ES-GC/AF



# FIRST AID



K-FAK-10	10 Person Plastic First Aid Kit, Sold by the Each
K-FAK-25-P	25 Person Plastic First Aid Kit, Sold by the Each
K-FAK-50-P	50 Person Plastic First Aid Kit, Sold by the Each
K-FAK-25	25 Person Metal First Aid Kit, Sold by the Each
K-FAK-50	50 Person Metal First Aid Kit, Sold by the Each
K-FAK-100	100 Person Metal First Aid Cabinet, Sold by the Each
K-FAK-3060SZ	All-In-One Blood Borne Pathogen Spill Cleanup Kit, Sold by the Each
K-FAK-21-004	Cold Pack, Sold by the Each, 30/CS
K-FAK-24-000SZ	16 Oz. Wall Mount, Single Bottle Eye Wash Station, Sold by the Each
K-FAK-24-102SZ	16 Oz. Wall Mount, Double Bottle Eye Wash Station, Sold by the Each
K-FAK-24-101	16 Oz. Replacement Eye Wash Bottle Only, Sold by the Each
K-FAK-24-202SZ	32 Oz. Wall Mount, Single Bottle Eye Wash Station, Sold by the Each
K-FAK-24-201	32 Oz. Replacement Eye Wash Bottle Only, Sold by the Each

ALL KITS ARE ANSI Z308.1-2015 APPROVED

K-FAK-10



K-FAK-25-P



K-FAK-50-P



K-FAK-100



K-FAK-3060SZ



# EYE WASH



K-FAK-24-102SZ



K-FAK-24-000SZ



ALL KITS ARE ANSI Z308.1-2015 APPROVED

## K-FAK-10

- (1X) Triangular Bandage
- (1X) Bandage Scissors
- (1X) Forceps
- (10X) Antiseptic Towelettes
- (6X) Burn Cream Packets
- (6X) Triple Antibiotic Packets
- (1X) 2" Gauze Bandage
- (16X) Plastic Adhesive Strips
- (2X) Fabric Fingertip Bandages
- (2X) Fabric Knuckle Bandages
- (4X) 3" X 3" Gauze Pads
- (1X) 1/2" Adhesive Tape
- (4X) Latex Exam Gloves
- (1X) Large Wound Pad
- (1X) First Aid Guide
- (1X) Plastic Case W/ O-Ring

## K-FAK-3060SZ

- (1X) Absorbant Spill Powder
- (1X) Red Biohazard Bag
- (1X) Clear Poly Bag
- (2X) Bag Ties
- (1X) Pair of Nitrile Gloves
- (10X) Paper Towels
- (1X) Germicidal Wipe
- (2X) Anti-Spetic Towelettes
- (1X) Spatula and Scoop
- (1X) Plastic Case W/ O-Ring

## K-FAK-25-P

- (20X) Alcohol Antiseptic Wipes
- (6X) Antiseptic Towelettes
- (3X) Sting Relief Wipes
- (1X) Bandage Scissors
- (1X) Forceps
- (6X) Burn Cream Packets
- (6X) Triple Antibiotic Packets
- (1X) Instant Cold Pack
- (1X) Triangular Bandage
- (32X) Plastic Adhesive Strips
- (2X) Fabric Fingertip Bandages
- (2X) Fabric Knuckle Bandages
- (5X) 3" X 3" Gauze pads
- (1X) 4" Gauze Pad
- (1X) Large Wound Pad
- (1X) 1/2" Adhesive Tape
- (4X) Latex Exam Gloves
- (1X) 1 Fl Oz Eye Wash Solution
- (1X) First Aid Guide
- (1X) Plastic Case W/ O-Ring

## K-FAK-50-P

- (20X) Alcohol Antiseptic Wipes
- (15X) Antiseptic Towelettes
- (3X) Sting Relief Wipes
- (4X) PVP Iodine Wipes
- (1X) Bandage Scissors
- (1X) Forceps
- (12X) Burn Cream Packets
- (12X) Triple Antibiotic Packets
- (1X) 2" Elastic Bandage
- (1X) 2" Gauze Bandage
- (1X) 4" Gauze Bandage
- (1X) 1/2" Adhesive Tape
- (10X) Fabric Fingertip Bandages
- (10X) Fabric Knuckle Bandages
- (60X) Plastic Adhesive Strips
- (1X) Instant Cold Pack
- (1X) Triangular Bandages
- (5X) 3" X 3" Gauze Pads
- (4X) Latex Exam Gloves
- (1X) Large Wound Pad
- (1X) First Aid Guide
- (1X) Plastic Case W/ O-Ring

## K-FAK-100

- (100X) Alcohol Antiseptic Wipes
- (2X) 5" X 9" Abdominal Pad
- (10X) 4" X 4" Gauze Pads
- (2X) Gauze Bandage
- (2X) 1/2" Adhesive Tape
- (4X) Sterile Eye Pads with Tape Strips
- (4X) Nitrile Exam Gloves
- (10X) Latex Exam Gloves
- (2X) Instant Cold Packs
- (50X) Extra Strength Non-Aspirin Tylenol
- (1X) Bandage Scissors
- (1X) Forceps
- (2X) Triangular Bandages
- (200X) 1" X 3" Plastic Adhesive Strips
- (15X) 2" X 3" Extra Large Bandages
- (15X) Knuckle Bandages
- (15X) Fingertip Bandages
- (10X) Sting Relief Wipes
- (25X) Burn Cream Packets
- (1X) 4 Fl Oz Eye Wash Solution
- (1X) 4 Fl Oz Burn Spray
- (1X) 2" Elastic Bandage
- (1X) 4" Elastic Bandage
- (1X) First Aid Guide
- (1X) Metal Cabinet



# HEARING PROTECTION

RM-6405	Moldex® Rockets NRR 27dB Reusable Earplugs, Corded with Pocket-Pak Case, 50 Pairs/BX, 4 BX/CS
RM-6604	Moldex® SparkPlugs NRR 33dB Foam Uncorded Earplugs, 200 Pairs/BX, 10BX/CS
RM-6654	Moldex® SparkPlugs NRR 33dB Foam Corded Earplugs, 100 Pairs/BX, 20BX/CS
RM-6644	Moldex® SparkPlugs PlugStation Dispenser, 250 Pairs/Dispenser, 6 Dispensers/CS
RM-6645	Moldex® SparkPlugs PlugStation Dispenser, 500 Pairs/Dispenser, 4 Dispensers/CS
RM-6880	Moldex® Corded SparkPlugs PlugStation Dispenser, 150 Pairs/Dispenser, 4 Dispensers/CS
RH-QM24+	Howard Leight® Multiple-Position Earmuff, 25 NRR, Sold by the Each
RH-LL-1	Howard Leight Laser Lite® Uncorded Ear Plug, 32 NRR, 200 Pairs/BX 10BX/CS
RH-LL-30	Howard Leight Laser Lite® Corded Ear Plug, 32 NRR, 100 Pairs/BX 10BX/CS
RH-MAX-1	Howard Leight Max® Uncorded Ear Plug, 33 NRR, 200 Pairs/BX 10BX/CS
RH-MAX-30	Howard Leight Max® Corded Ear Plug, 33 NRR, 100 Pairs/BX 10BX/CS
RH-LPF-30	Howard Leight Max Lite® Corded Ear Plug, 30 NRR, 100 Pairs/BX 10BX/CS
RH-LT-30	Howard Leight Laser Track® Metal Detectable Corded Ear Plug, 32 NRR, 100 Pairs/BX 10BX/CS



RM-6405



RM-6604



RM-6654



RM-6644



RM-6645



RM-6880



RH-QM24+



RH-LL-30



RH-MAX-1



RH-LPF-30



RH-LT-30



# RAIN WEAR

BSBK-(SIZE)	Black Slush Boots, Sold by the Pair, Sizes 7-17
BSYE-(SIZE)	Yellow Slush Boots, Sold by the Pair, Sizes 7-18
WP10-1P-RD	Red One Piece PVC Rain Poncho, Hood & Side Snaps, Sold by the Each, 50/CS
W335-PP-(SIZE)	.35 MM Heavy Weight PVC/Polyester 3 Piece Yellow Rain Suit, Sold by the Each, SM-7X
WR35-PP-(SIZE)	.35 MM 48" Heavy Weight PVC/Polyester Full Length Yellow Raincoat, Sold by the Each, SM-4X

BSBK-(SIZE)



BSYE-(SIZE)



WP10-1P-RD



W335-PP-(SIZE)

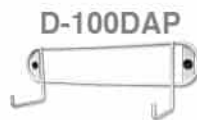


WR35-PP-(SIZE)

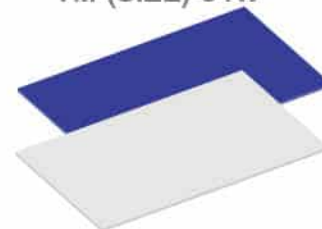


# MISCELLANEOUS PRODUCTS

D-100	Wall Mount Wire Rack for 50 & 100 Pack Disposable Gloves, Sold by the Each
D-100PE	Wall Mount Wire Rack for 100 Pack Polyethylene Gloves, Sold by the Each
D-100DAP	Wall Mount Wire Rack for DAP10 Aprons, Sold by the Each
D-200	Wall Mount Wire Rack for GDSH & GDCP Pack Disposable Gloves, Sold by the Each
D-200V	Wall Mount Wire Rack for 2 boxes, 50 & 100 Pack Disposable Gloves, Sold by the Each
D-400	Wall Mount Wire Rack for 4 boxes, 50 & 100 Pack Disposable Gloves, Sold by the Each
D-GDCP-HC	Plastic Wall Mount for GDCP-HC Polyethylene Gloves, Sold by the Each
D-400AC	Wall Mount Acrylic Holder for Disposable Gloves, 8/CS
D-900AC	Wall Mount Acrylic Holder for Bouffant Caps, 8/CS
TM-(SIZE)-34W	White Polyethylene Tacky Mats, 30Sheets/Mat 4Mats/CS
TM-(SIZE)-34B	Blue Polyethylene Tacky Mats, 30Sheets/Mat 4Mats/CS
D-TSC-250E	White Toilet Seat Dispenser Holder, 10/CS
PW-18-4R80-H	18" Wide Hand Pallet Wrap, 1500Ft/Roll 4Rolls/CS
GNBJ-18-2R	18" Neoprene Fryer Glove, Sold by the Pair
Z-BACKSUP-(SIZE)	Back Support, Detachable Suspenders, XS-4X
TSC-250E	Standard Paper Toilet Seat Covers, 250/BX 20BX/CS
TRASH CAN LINERS	We Stock Many Sizes And Thicknesses of High & Low Density Liners. (Please Call For Sizes And Pricing)



TM-(SIZE)-34B  
TM-(SIZE)-34W



PW-18-4R80-H



GNBJ-18-2R



TSC-250E



D-TSC



Z-BACKSUP-(SIZE)



TRASH CAN LINERS





# WHOLESALE LINES

**Honeywell**

**uvex**

(EYE PROTECTION)

**HOWARD  
LEIGHT** 

(HEARING  
PROTECTION)

**fend·all**

(EYE WASH STATIONS)

**NORTH**

*Safety Products*

**MILLER**  
Fall Protection

**DUPONT**

**Tyvek**<sup>®</sup>

(DISPOSABLE APPAREL)

**CREWS**  
INC.

(EYE PROTECTION)

**MOLDEX**

(HEARING &  
RESPIRATORY PROTECTION)

**BAUSCH  
& LOMB**

(LENS CLEANING STATIONS)





# Chemical Resistance Chart

This chemical chart is for reference use only. We recommend on-site testing of all gloves and provide free samples to determine safe usage.



	Latex	Nitrile	Vinyl		Latex	Nitrile	Vinyl
Acetaldehyde, 99.5%	Green	Green	Red	Hydrochloric Acid, 38%	Green	Green	Green
Acetic Acid	Green	Green	Green	Hydrofluoric Acid, 48%	Green	Green	Green
Acetone, 99.5%	Green	Red	Red	Hydrogen Peroxide, 30%	Green	Green	Green
Acetonitrile, 99%	Green	Green	Red	Hydroquinone	Green	Green	Green
Acrylic Acid, 99%	Green	Orange	Black	Hypophosphorus Acid, 50%	Orange	Red	Red
Acrylonitrile	Green	Green	Orange	Iodine	Green	Green	Green
Ammonium Fluoride, 40%	Green	Green	Green	Isobutyl Alcohol, 99%	Green	Green	Green
Ammonium Hydroxide, 85%	Green	Red	Green	Iso-Octane, 99%	Orange	Green	Red
Amyl Acetate, 100%	Red	Green	Orange	Isopropanol	Black	Green	Black
Amyl Alcohol, 99%	Green	Green	Green	Isopropyl Alcohol, 99%	Orange	Green	Black
Aniline, 99%	Orange	Red	Orange	Isopropyl Benzene	Black	Green	Black
Animal Fats	Red	Green	Green	Kerosene, 100%	Green	Green	Red
Aqua Regia	Red	Green	Green	Lactic Acid, 85%	Green	Green	Green
Battery Acid	Green	Green	Green	Lauric Acid, 36%	Green	Green	Orange
Benzaldehyde, 99.5%	Orange	Red	Red	Linoleic Acid	Red	Green	Green
Benzene	Red	Green	Orange	Linseed Oil	Red	Green	Green
Benzyl Chloride	Orange	Green	Red	Maleic Acid, 100%	Green	Green	Green
Bromine	Green	Black	Green	Methanol	Black	Green	Black
Bromopropionic Acid, Sat	Green	Green	Black	Methyl Acetate	Red	Red	Black
Butane	Red	Green	Red	Methyl Alcohol, 99.9%	Green	Green	Green
2-Butoxyethanol	Black	Green	Black	Methylamine, 40%	Green	Green	Green
Butyl Acetate, 99%	Red	Orange	Red	Methyl-Butyl Ether, 99.8%	Red	Green	Black
Butyl Alcohol, 99%	Green	Green	Green	Methyl Cellosolve, 99%	Orange	Orange	Red
Butyl Cellosolve, 99%	Green	Green	Red	Methylamine	Green	Green	Green
Butyrolactone, 99%	Green	Red	Black	Methyl Chloride	Red	Red	Red
Calcium Hypochlorite	Red	Green	Green	Methylene Chloride	Orange	Green	Orange
Carbolic Acid	Red	Red	Green	Methyl Ethyl Ketone, 99%	Red	Red	Red
Carbon Dichloride	Black	Green	Black	Methyl Isobutyl Ketone	Orange	Red	Black
Carbon Disulfide, 99.9%	Red	Orange	Red	Methyl Methacrylate	Red	Red	Black
Carbon Tetrachloride, 99%	Red	Orange	Orange	Methyl-T-Butyl Ether	Black	Green	Black
Castor Oil	Green	Green	Green	Mineral Oil	Red	Green	Orange
Cellosolve Acetate, 99%	Green	Green	Red	Mineral Spirits, 100%	Red	Green	Red
Cellosolve Solvent	Green	Green	Black	Monoethanolamine, 99%	Orange	Green	Green
Chlorine	Green	Green	Green	Morpholine, 99%	Orange	Red	Orange
Chloroacetone	Orange	Black	Red	Muriatic Acid, 100%	Green	Green	Green
Chlorobenzene	Green	Green	Orange	Naphtha VM&P, 100%	Red	Green	Red
Chloroform	Red	Green	Red	N-Methyl-2 Pyrrolidone, 99%	Orange	Red	Black
Chloronaphthalenes	Black	Orange	Black	Naphthalene	Green	Green	Green
Chlorothene YG	Black	Orange	Red	Nitric Acid, 10%	Green	Green	Green
Chromic Acid, 50%	Red	Orange	Green	Nitric Acid, 70%	Red	Red	Orange
Citric Acid, 10%	Green	Green	Green	Nitrobenzene, 99%	Orange	Red	Red
Cottonseed Oil	Red	Green	Green	Nitromethane, 95.5%	Green	Red	Red
Creosol	Red	Green	Orange	Nitropropane, 95.5%	Green	Red	Black
Cunene	Black	Green	Black	Octyl Alcohol, 99%	Green	Green	Green
Cutting Oil	Orange	Green	Red	Oleic Acid, 99%	Green	Green	Green
Cyclohexane	Red	Green	Red	Oxalic Acid, 12.5%	Green	Green	Green
Cyclohexanol, 98%	Green	Green	Orange	Paint Remover	Orange	Green	Red
Diacetone Alcohol, 99%	Orange	Green	Orange	Palmitic Acid, Sat.	Green	Green	Green
Dibutyl Phthalate, 99%	Orange	Green	Red	Pentachlorophenol, 35%	Red	Green	Black
Diamine	Black	Green	Black	Pentane, 98%	Red	Green	Green
Diethylamine, 99%	Red	Orange	Red	Perchloric Acid, 60%	Orange	Orange	Green
Diethyl Ether	Orange	Green	Red	Perchloroethylene	Black	Green	Black
Di-Isobutyl Ketone, 80%	Orange	Green	Green	Perchloroethylene Ether	Black	Green	Black
Dimethyl Acetamide, 99%	Orange	Red	Black	Phenol, 90%	Green	Red	Green
N,N-Dimethyl Formamide, 99%	Green	Red	Red	Phosphoric Acid, 85%	Red	Green	Green
Dimethyl Sulfoxide, 99%	Green	Green	Red	Picric Acid	Green	Green	Green
Diethyl Phthalate, 99%	Orange	Green	Black	Potassium Hydroxide, 50%	Green	Green	Green
1,4-Dioxane, 99.9%	Orange	Red	Orange	Printing Ink	Green	Green	Orange
Epichlorohydrin, 99%	Orange	Red	Black	Propyl Acetate, 99%	Red	Orange	Red
Ethanol	Black	Green	Black	Propyl Alcohol, 96%	Green	Green	Orange
2-Ethoxyethanol	Black	Green	Black	Propylene Oxide	Red	Black	Black
Ethyl Acetate, 99%	Orange	Red	Red	Pyridine, 99%	Orange	Red	Black
Ethyl Alcohol, 90%	Green	Green	Green	Rubber Solvent, 100%	Red	Green	Red
Ethyl Ether, 99%	Orange	Green	Green	Rule Solvent	Black	Green	Black
Ethylene Dichloride	Red	Green	Red	Sodium Hydroxide, 50%	Green	Green	Green
Ethylene Glycol, 99%	Green	Green	Black	Sodium Hypochlorite	Green	Orange	Green
Ethyl Glycol Ether, 99%	Orange	Orange	Black	Stoddard Solvent, 99%	Red	Red	Green
Ethylene Trichloride	Red	Red	Black	Styrene	Green	Orange	Green
Fluorine	Green	Black	Green	Sulfuric Acid, 95%	Green	Green	Green
Formaldehyde, 99%	Green	Green	Green	Tannic Acid, 37.5%	Green	Green	Green
Formalin Solution	Black	Green	Black	1,1,2,2-Tetrachloroethane, 99%	Red	Red	Black
Formic Acid, 95%	Green	Orange	Green	Tetrachloroethylene, 100%	Red	Red	Orange
Freon TF, 99%	Red	Orange	Orange	Toluene, 99%	Red	Red	Orange
Furfural, 99%	Green	Red	Red	Toluene Di-isocyanate	Red	Black	Red
Gasoline, 100%	Red	Green	Orange	1,1,1-Trichloroethane, 99%	Red	Red	Black
Glutaraldehyde, 25%	Red	Green	Orange	Trichloroethylene	Red	Green	Orange
Glycerine	Green	Green	Green	Tricresyl Phosphate, 90%	Red	Green	Orange
Glycerol	Green	Green	Green	Triethanolamine, 85%	Orange	Green	Green
Heptane	Black	Green	Black	Tung Oil	Black	Green	Orange
Hexamethyldisilazane, 97%	Green	Green	Black	Turbine Oil	Red	Green	Orange
Hexane, 99%	Red	Green	Red	Turpentine, 100%	Red	Green	Red
Hydraulic Fluid-Petrol Based	Red	Green	Green	Vegetable Oil	Red	Green	Orange
Hydraulic Fluid- Ester Based	Red	Red	Red	Vinyl Acetate	Red	Orange	Red
Hydrazine, 65%	Red	Green	Green	Xylene	Red	Orange	Red

**Established in 1973, The Safety Zone sells through authorized distribution only and never direct to end users.**



**● WORLDWIDE HEADQUARTERS**  
Guilford, CT

**● DISTRIBUTION CENTERS**  
Richmond, IN  
Buena Park, CA  
Houston, TX  
Pompano Beach, FL

**THE SAFETY ZONE, LLC**

385 Long Hill Road | PO Box 449 | Guilford, CT 06437

t: 800.821.5702 | f: 800.783.2987 | [safetyzone.com](http://safetyzone.com)





the **SAFETY**  
**ZONE**®